



# 2017 IMPACT GUIDE

**WOMEN** WOMEN'S  
FOUNDATION  
OF  
MINNESOTA

# Impact Through Research, Listening, and Investing in Community-Led Solutions

As a statewide community foundation, we make grants, invest in research, advocate policy, and forge cross-sector partnerships to ensure community-based, community-led solutions across Minnesota. We lead with an intersectional equity framework (gender, race, place, ability, LGBTQ+) to target resources and ensure equity in outcomes.

---

## 2017 Impact Indicators



76%

### OPPORTUNITY

Average wages of Pathways to Prosperity participants increased by 45% after receiving training, from an hourly wage of \$12.77 to \$18.55. **76% obtained a new job after training**, and credited the program with increasing access to new opportunity.



15,000

### SAFETY

As co-chairs of the Super Bowl Anti-Sex Trafficking Committee, our focus was on preventing trafficking and ending the demand. **More than 15,000 people were trained to spot the signs of sex trafficking and how to respond.**



90%

### LEADERSHIP

girlsBEST participants have a **90% post-secondary education enrollment**, compared to 44-72% in Minnesota overall, depending on ethnicity.



### YOUR DOLLARS AT WORK

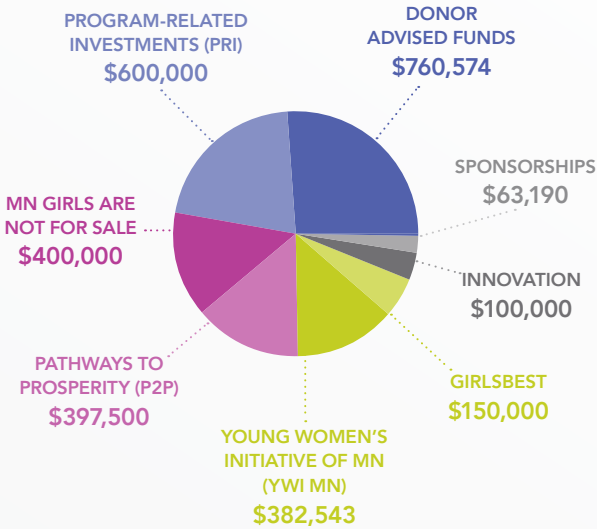
87.5% PROGRAMS

12.2% ADMINISTRATION

0.3% FUNDRAISING

## Total Granted in Fiscal Year 2017

(4.1.16 – 3.31.17)



# 186

GRANTS MADE IN FISCAL YEAR 2017

## \$2,853,807

Total amount of community investments distributed in FY17.

## \$24,853,807

Total granted since our inception in 1983.

## Community Impact

Number of Minnesotans Impacted by Our Grants

Grants	Number of People
P2P	8,510
GIRLSBEST	235,026
INNOVATION	109,610
MN GIRLS	353,146
YWI MN	1,500
<b>TOTAL</b>	<b>707,792</b>

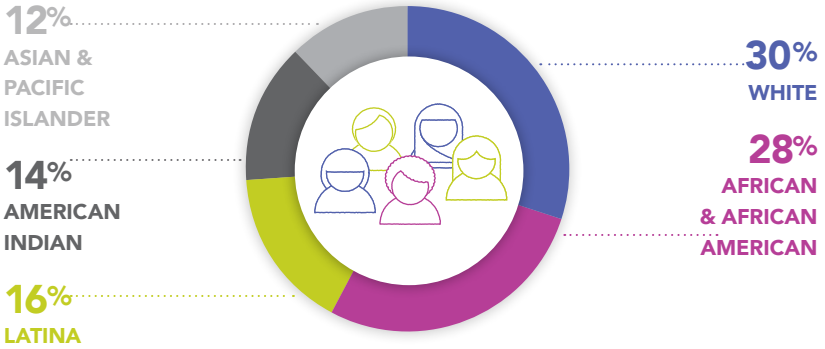
## Program-Related Investments

(2012 – 2017)

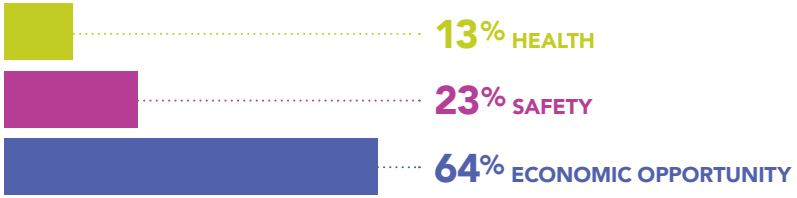
WFMN's **\$600,000** investment in PRIs leveraged **\$4 million** in investments to benefit women, girls, and women entrepreneurs.

# Statewide Community Investments

## Communities We Serve



## Funding by Focus Area



## Funding by Geographic Area

